

Chatterton Way between Royal Oak Dr and Royal Oak Ave
February 25, 2020 To February 27, 2020



The data presented here is for information purposes only and should not be considered authoritative for construction, geotechnical, engineering, navigational, legal, or other site-specific uses. The information shared is owned by the Transportation Division of the Engineering Department at the District of Saanich. Accuracy is not guaranteed.

Start Date: 24-Feb-20
 Start Time: 0:22
 Station ID: C0014-03

Location 1: Chatterton Way between Royal Oak Dr and Royal Oak Ave

Note:

DATE:	February 24, 2020		February 25, 2020		February 26, 2020		February 27, 2020		February 28, 2020		WK AVG		WK AVG	HOURLY
	MON		TUE		WED		THURS		FRI				CH 1+2	%
Time:	NB	SB	NB	SB	NB	SB	NB	SB	NB	SB	NB	SB		
12-1 AM			1	1	2	1	2	4			2	2	4	0.1%
1-2 AM			3	5	2	3	0	0			2	3	4	0.1%
2-3 AM			0	0	1	0	3	0			1	0	1	0.0%
3-4 AM			2	0	2	0	2	0			2	0	2	0.1%
4-5 AM			2	3	1	3	2	4			2	3	5	0.1%
5-6 AM			8	7	4	6	3	4			5	6	11	0.3%
6-7 AM			29	24	36	26	34	35			33	28	61	1.5%
7-8 AM			58	82	53	68	61	73			57	74	132	3.3%
8-9 AM			125	130	109	140	113	116			116	129	244	6.2%
9-10 AM			120	140	123	133	125	136			123	136	259	6.5%
10-11 AM			138	149	117	134	161	141			139	141	280	7.1%
11-12 PM			163	153	177	157	186	169			175	160	335	8.4%
12-1 PM			147	163	179	176	188	216			171	185	356	9.0%
1-2 PM			166	172	173	218	168	182			169	191	360	9.1%
2-3 PM			169	193	168	200	174	213			170	202	372	9.4%
3-4 PM			174	209	168	207	174	189			172	202	374	9.4%
4-5 PM			191	177	186	168	195	169			191	171	362	9.1%
5-6 PM			157	143	149	142	136	155			147	147	294	7.4%
6-7 PM			72	90	80	89	103	120			85	100	185	4.7%
7-8 PM			45	83	72	73	63	82			60	79	139	3.5%
8-9 PM			39	40	35	59	51	48			42	49	91	2.3%
9-10 PM			14	23	22	23	26	45			21	30	51	1.3%
10-11 PM			17	17	11	10	16	13			15	13	28	0.7%
11-12 AM			7	12	4	14	5	16			5	14	19	0.5%
LANES			1847	2016	1874	2050	1991	2130			1904	2065	3969	100.0%
TOTAL			3863		3924		4121				3970			
	MON		TUE		WED		THURS		FRI	WK AVG				

PEAK HOUR					TOTAL VEHICALS-PEAK PERIODS		2 HOUR PEAK INTERVALS				
MAX. 7 - 9 am PEAK HOUR	244	⇒	6.2%	between 8-9 AM	1723	⇒	6 HR TOTAL	2 HR AM (7 - 9 AM)			
MAX. 7 - 11 am PEAK HOUR	280	⇒	7.1%	between 10-11 AM	1032	⇒	4 HR TOTAL	VEH / HR	VEH / 2HR	2 HR %	
MAX. 11 am - 1 pm PEAK HOUR	356	⇒	9.0%	between 12-1 PM				7-8 AM	132	376	9.5%
MAX. 11 am - 3 pm PEAK HOUR	372	⇒	9.4%	between 2-3 PM				8-9 AM	244		
MAX. 4 - 6 pm PEAK HOUR	362	⇒	9.1%	between 4-5 PM				2 HR NOON (11 - 1 PM)			
MAX. 3 - 6 pm PEAK HOUR	374	⇒	9.4%	between 3-4 PM				VEH / HR	VEH / 2HR	2 HR %	
								11-12 PM	335	691	17.4%
								12-1 PM	356		
								2 HR PM (4 - 6 PM)			
								VEH / HR	VEH / 2HR	2 HR %	
								4-5 PM	362	656	16.5%
								5-6 PM	294		

Chatterton Way between Royal Oak Dr and Royal Oak Ave

Northbound

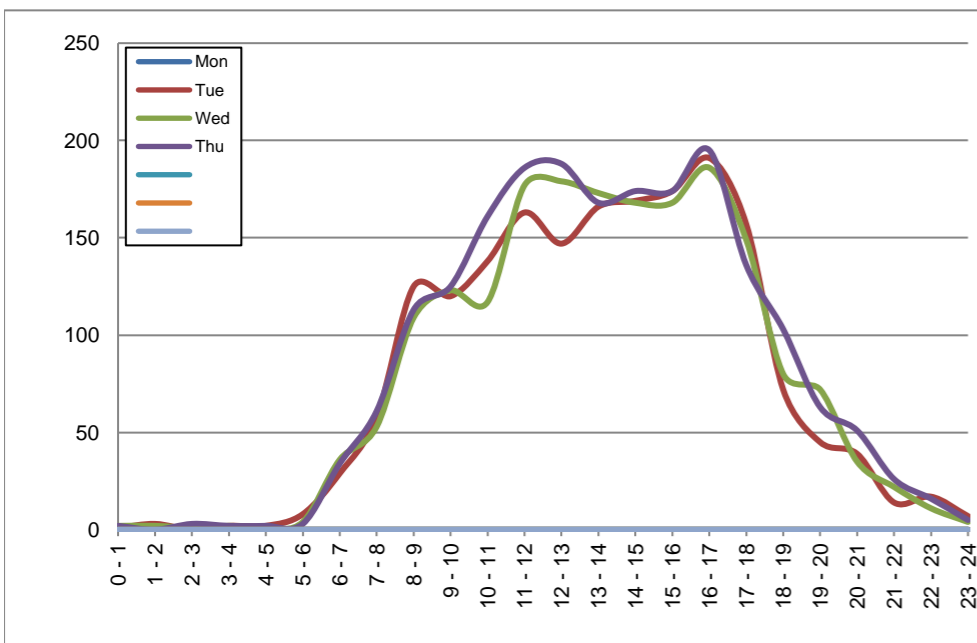
February 24, 2020 to February 27, 2020

Hourly Volumes

Time Period	Mon	Tue	Wed	Thu			
	Feb 24	Feb 25	Feb 26	Feb 27			
0 - 1		1	2	2			
1 - 2		3	2	0			
2 - 3		0	1	3			
3 - 4		2	2	2			
4 - 5		2	1	2			
5 - 6		8	4	3			
6 - 7		29	36	34			
7 - 8		58	53	61			
8 - 9		125	109	113			
9 - 10		120	123	125			
10 - 11		138	117	161			
11 - 12		163	177	186			
12 - 13		147	179	188			
13 - 14		166	173	168			
14 - 15		169	168	174			
15 - 16		174	168	174			
16 - 17		191	186	195			
17 - 18		157	149	136			
18 - 19		72	80	103			
19 - 20		45	72	63			
20 - 21		39	35	51			
21 - 22		14	22	26			
22 - 23		17	11	16			
23 - 24		7	4	5			
Day Total		1847	1874	1991			

15-Minute Volumes

Time Start	Mon	Tue	Wed	Thu				Time Start	Mon	Tue	Wed	Thu			
	Feb 24	Feb 25	Feb 26	Feb 27					Feb 24	Feb 25	Feb 26	Feb 27			
0:00		0	1	1				12:00		34	48	45			
0:15		1	0	1				12:15		41	36	39			
0:30		0	1	0				12:30		34	37	54			
0:45		0	0	0				12:45		38	58	50			
1:00		2	1	0				13:00		46	51	35			
1:15		0	0	0				13:15		42	34	52			
1:30		0	1	0				13:30		41	45	41			
1:45		1	0	0				13:45		37	43	40			
2:00		0	1	0				14:00		42	49	40			
2:15		0	0	0				14:15		42	35	42			
2:30		0	0	2				14:30		37	44	45			
2:45		0	0	1				14:45		48	40	47			
3:00		0	1	1				15:00		33	32	40			
3:15		0	0	1				15:15		49	42	45			
3:30		1	0	0				15:30		44	54	42			
3:45		1	1	0				15:45		48	40	47			
4:00		0	0	0				16:00		45	53	48			
4:15		2	1	1				16:15		46	44	43			
4:30		0	0	0				16:30		55	41	51			
4:45		0	0	1				16:45		45	48	53			
5:00		1	0	1				17:00		42	42	39			
5:15		1	1	1				17:15		38	42	37			
5:30		3	1	0				17:30		37	36	33			
5:45		3	2	1				17:45		40	29	27			
6:00		3	3	3				18:00		12	31	26			
6:15		7	11	10				18:15		22	16	30			
6:30		5	7	9				18:30		16	15	25			
6:45		14	15	12				18:45		22	18	22			
7:00		11	2	13				19:00		16	20	12			
7:15		18	14	15				19:15		8	26	26			
7:30		12	16	15				19:30		13	15	9			
7:45		17	21	18				19:45		8	11	16			
8:00		25	22	22				20:00		17	12	12			
8:15		29	32	23				20:15		10	7	14			
8:30		30	25	36				20:30		6	11	15			
8:45		41	30	32				20:45		6	5	10			
9:00		22	38	28				21:00		4	6	9			
9:15		32	28	25				21:15		3	8	8			
9:30		29	28	30				21:30		4	4	5			
9:45		37	29	42				21:45		3	4	4			
10:00		30	29	30				22:00		4	4	2			
10:15		32	24	39				22:15		7	2	7			
10:30		35	29	43				22:30		2	0	3			
10:45		41	35	49				22:45		4	5	4			
11:00		44	36	45				23:00		3	2	0			
11:15		42	42	43				23:15		2	0	1			
11:30		36	46	48				23:30		0	2	1			
11:45		41	53	50				23:45		2	0	3			



Site notes:

Chatterton Way between Royal Oak Dr and Royal Oak Ave

Southbound

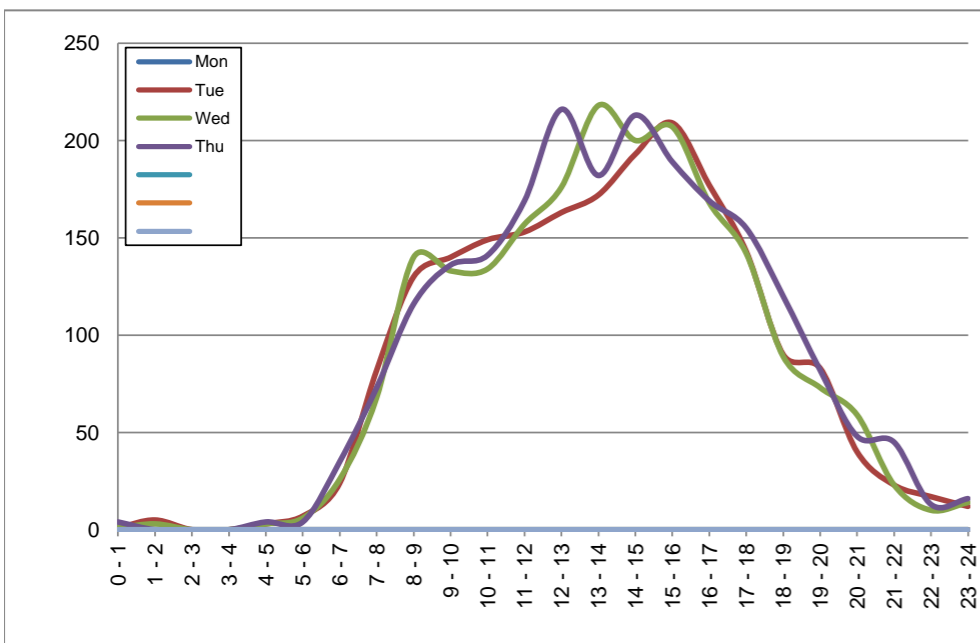
February 24, 2020 to February 27, 2020

Hourly Volumes

Time Period	Mon	Tue	Wed	Thu			
	Feb 24	Feb 25	Feb 26	Feb 27			
0 - 1		1	1	4			
1 - 2		5	3	0			
2 - 3		0	0	0			
3 - 4		0	0	0			
4 - 5		3	3	4			
5 - 6		7	6	4			
6 - 7		24	26	35			
7 - 8		82	68	73			
8 - 9		130	140	116			
9 - 10		140	133	136			
10 - 11		149	134	141			
11 - 12		153	157	169			
12 - 13		163	176	216			
13 - 14		172	218	182			
14 - 15		193	200	213			
15 - 16		209	207	189			
16 - 17		177	168	169			
17 - 18		143	142	155			
18 - 19		90	89	120			
19 - 20		83	73	82			
20 - 21		40	59	48			
21 - 22		23	23	45			
22 - 23		17	10	13			
23 - 24		12	14	16			
Day Total		2016	2050	2130			

15-Minute Volumes

Time Start	Mon	Tue	Wed	Thu				Time Start	Mon	Tue	Wed	Thu			
	Feb 24	Feb 25	Feb 26	Feb 27					Feb 24	Feb 25	Feb 26	Feb 27			
0:00		0	0	1				12:00		38	29	55			
0:15		0	0	2				12:15		40	49	56			
0:30		1	1	1				12:30		45	52	54			
0:45		0	0	0				12:45		40	46	51			
1:00		3	2	0				13:00		35	52	65			
1:15		1	0	0				13:15		44	61	33			
1:30		1	0	0				13:30		45	51	39			
1:45		0	1	0				13:45		48	54	45			
2:00		0	0	0				14:00		40	45	50			
2:15		0	0	0				14:15		42	58	42			
2:30		0	0	0				14:30		63	43	68			
2:45		0	0	0				14:45		48	54	53			
3:00		0	0	0				15:00		59	65	54			
3:15		0	0	0				15:15		40	53	56			
3:30		0	0	0				15:30		57	50	43			
3:45		0	0	0				15:45		53	39	36			
4:00		0	1	1				16:00		40	39	47			
4:15		1	1	2				16:15		45	51	39			
4:30		2	1	1				16:30		43	44	38			
4:45		0	0	0				16:45		49	34	45			
5:00		0	0	0				17:00		42	35	40			
5:15		2	1	0				17:15		40	34	35			
5:30		2	3	2				17:30		32	37	42			
5:45		3	2	2				17:45		29	36	38			
6:00		3	4	6				18:00		28	35	30			
6:15		9	7	8				18:15		23	29	36			
6:30		4	8	9				18:30		20	15	31			
6:45		8	7	12				18:45		19	10	23			
7:00		17	11	12				19:00		30	18	31			
7:15		16	14	16				19:15		13	22	19			
7:30		16	20	17				19:30		21	17	17			
7:45		33	23	28				19:45		19	16	15			
8:00		25	29	22				20:00		9	16	14			
8:15		40	43	30				20:15		8	15	9			
8:30		33	32	28				20:30		12	12	12			
8:45		32	36	36				20:45		11	16	13			
9:00		23	27	28				21:00		9	6	17			
9:15		41	33	33				21:15		6	6	12			
9:30		39	36	33				21:30		6	5	10			
9:45		37	37	42				21:45		2	6	6			
10:00		32	33	35				22:00		4	4	7			
10:15		36	38	32				22:15		2	3	4			
10:30		31	28	37				22:30		8	1	0			
10:45		50	35	37				22:45		3	2	2			
11:00		38	35	46				23:00		7	5	10			
11:15		42	39	44				23:15		4	4	3			
11:30		36	45	40				23:30		1	3	2			
11:45		37	38	39				23:45		0	2	1			



Site notes:

Vehicle Speed Summary

Saanich Engineering Department

Count Id: [C0014-03](#)

Filename: [Chatterton Way between Royal Oak Dr and Royal Oak Ave-Feb-2020.xlsm](#)

Location: Chatterton Way between Royal Oak Dr and Royal Oak Ave

Note:

Direction: **North-South**

Dates: **February 25, 2020 To February 27, 2020**

Filtered data

AVG. SPEED	25 mph	40 km/h
50 % SPEED	25 mph	41 km/h
85 % SPEED	30 mph	49 km/h
95 % SPEED	33 mph	53 km/h

Location Map



Chatterton Way between Royal Oak Dr and Royal Oak Ave

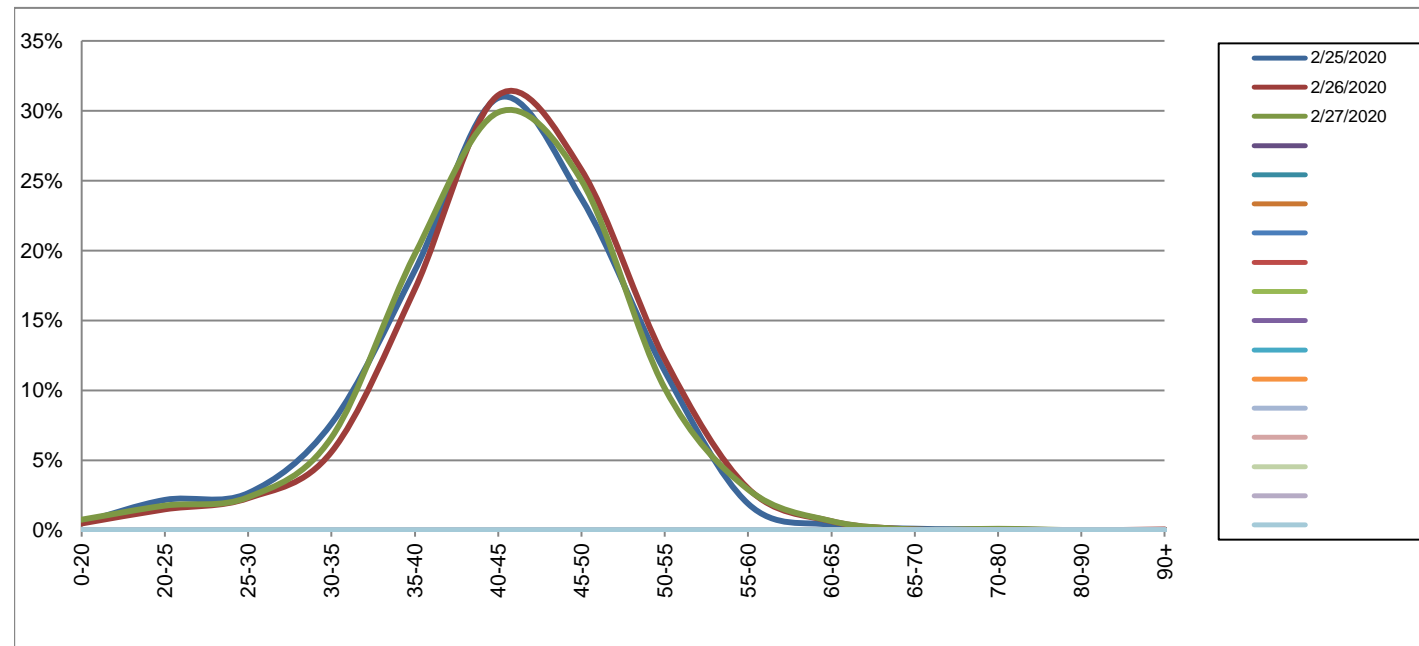
Northbound

February 25, 2020 to February 27, 2020

Daily Speed Bin Percentages														Daily Speed Bin Volumes														Total	Avg.	
Bin #	1	2	3	4	5	6	7	8	9	10	11	12	13	14	1	2	3	4	5	6	7	8	9	10	11	12	13	14	Volume	Speed
Bin Speeds	0-20	20-25	25-30	30-35	35-40	40-45	45-50	50-55	55-60	60-65	65-70	70-80	80-90	90+	0-20	20-25	25-30	30-35	35-40	40-45	45-50	50-55	55-60	60-65	65-70	70-80	80-90	90+		
2/25/2020	0.5%	2.2%	2.7%	7.6%	18.6%	30.9%	23.7%	11.4%	1.9%	0.4%	0.1%	0.1%	0.0%	0.0%	10	40	49	141	343	571	438	210	35	7	2	1	0	0	1847	43
2/26/2020	0.5%	1.5%	2.3%	5.6%	17.2%	31.1%	25.8%	12.2%	3.0%	0.6%	0.1%	0.1%	0.0%	0.1%	9	28	43	105	323	583	483	229	56	12	1	1	0	1	1874	43
2/27/2020	0.8%	1.8%	2.4%	6.6%	19.7%	29.9%	25.0%	10.1%	2.9%	0.7%	0.1%	0.1%	0.0%	0.0%	15	35	47	132	393	595	498	202	58	13	1	2	0	0	1991	43
Total	0.6%	1.8%	2.4%	6.6%	18.5%	30.6%	24.8%	11.2%	2.6%	0.6%	0.1%	0.1%	0.0%	0.0%	34	103	139	378	1059	1749	1419	641	149	32	4	4	0	1	5712	43

Speed Data Summary

Bin #	1	2	3	4	5	6	7	8	9	10	11	12	13	14	Total
Bin Speeds	0-20	20-25	25-30	30-35	35-40	40-45	45-50	50-55	55-60	60-65	65-70	70-80	80-90	90+	
Survey Total	34	103	139	378	1059	1749	1419	641	149	32	4	4	0	1	5712
% Total	0.6%	1.8%	2.4%	6.6%	18.5%	30.6%	24.8%	11.2%	2.6%	0.6%	0.1%	0.1%	0.0%	0.0%	100%
Accumulated %	0.6%	2.4%	4.8%	11.4%	30.0%	60.6%	85.5%	96.7%	99.3%	99.8%	99.9%	100.0%	100.0%	100%	
Inverse Accum. %	99.4%	97.6%	95.2%	88.6%	70.0%	39.4%	14.5%	3.3%	0.7%	0.2%	0.1%	0.0%	0.0%	0.0%	
Average Speed	43 KM/H														



Site notes:

Chatterton Way between Royal Oak Dr and Royal Oak Ave

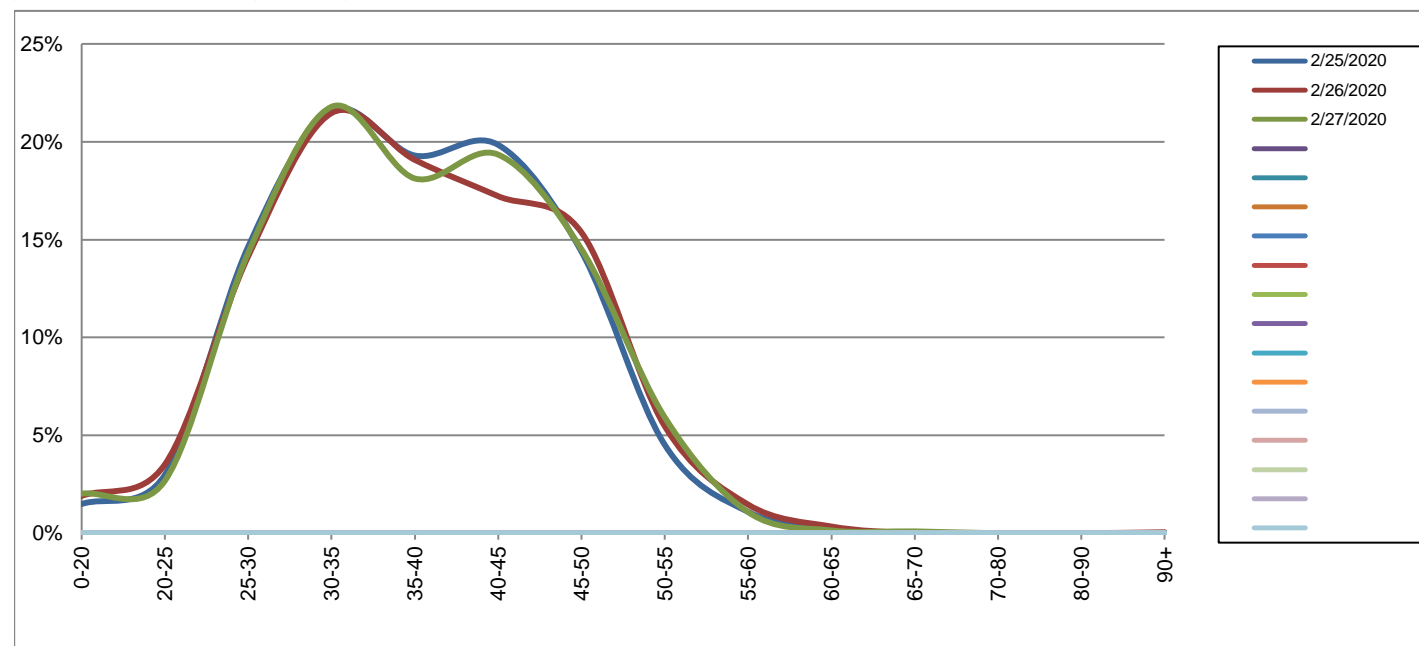
Southbound

February 25, 2020 to February 27, 2020

Daily Speed Bin Percentages															Daily Speed Bin Volumes														Total	Avg. Speed
Bin #	1	2	3	4	5	6	7	8	9	10	11	12	13	14	1	2	3	4	5	6	7	8	9	10	11	12	13	14		
Bin Speeds	0-20	20-25	25-30	30-35	35-40	40-45	45-50	50-55	55-60	60-65	65-70	70-80	80-90	90+	0-20	20-25	25-30	30-35	35-40	40-45	45-50	50-55	55-60	60-65	65-70	70-80	80-90	90+	Speed	
2/25/2020	1.5%	3.0%	14.6%	21.6%	19.3%	19.8%	14.4%	4.5%	1.1%	0.2%	0.0%	0.0%	0.0%	0.0%	30	60	295	435	389	400	290	91	22	4	0	0	0	0	2016	37
2/26/2020	1.9%	3.5%	14.1%	21.5%	19.1%	17.2%	15.4%	5.5%	1.5%	0.3%	0.0%	0.0%	0.0%	0.0%	39	72	290	440	391	353	315	112	30	7	0	0	0	1	2050	38
2/27/2020	2.0%	2.7%	14.3%	21.8%	18.1%	19.3%	14.5%	5.9%	1.1%	0.1%	0.1%	0.0%	0.0%	0.0%	43	57	305	464	386	412	309	126	23	3	2	0	0	0	2130	38
Total	1.8%	3.1%	14.4%	21.6%	18.8%	18.8%	14.8%	5.3%	1.2%	0.2%	0.0%	0.0%	0.0%	0.0%	112	189	890	1339	1166	1165	914	329	75	14	2	0	0	1	6196	38

Speed Data Summary

Bin #	1	2	3	4	5	6	7	8	9	10	11	12	13	14	Total
Bin Speeds	0-20	20-25	25-30	30-35	35-40	40-45	45-50	50-55	55-60	60-65	65-70	70-80	80-90	90+	Speed
Survey Total	112	189	890	1339	1166	1165	914	329	75	14	2	0	0	1	6196
% Total	1.8%	3.1%	14.4%	21.6%	18.8%	18.8%	14.8%	5.3%	1.2%	0.2%	0.0%	0.0%	0.0%	0.0%	100%
Accumulated %	1.8%	4.9%	19.2%	40.8%	59.7%	78.5%	93.2%	98.5%	99.7%	100.0%	100.0%	100.0%	100.0%	100%	
Inverse Accum. %	98.2%	95.1%	80.8%	59.2%	40.3%	21.5%	6.8%	1.5%	0.3%	0.0%	0.0%	0.0%	0.0%	0.0%	
Average Speed	38 KM/H														



Site notes:

Chatterton Way between Royal Oak Dr and Royal Oak Ave

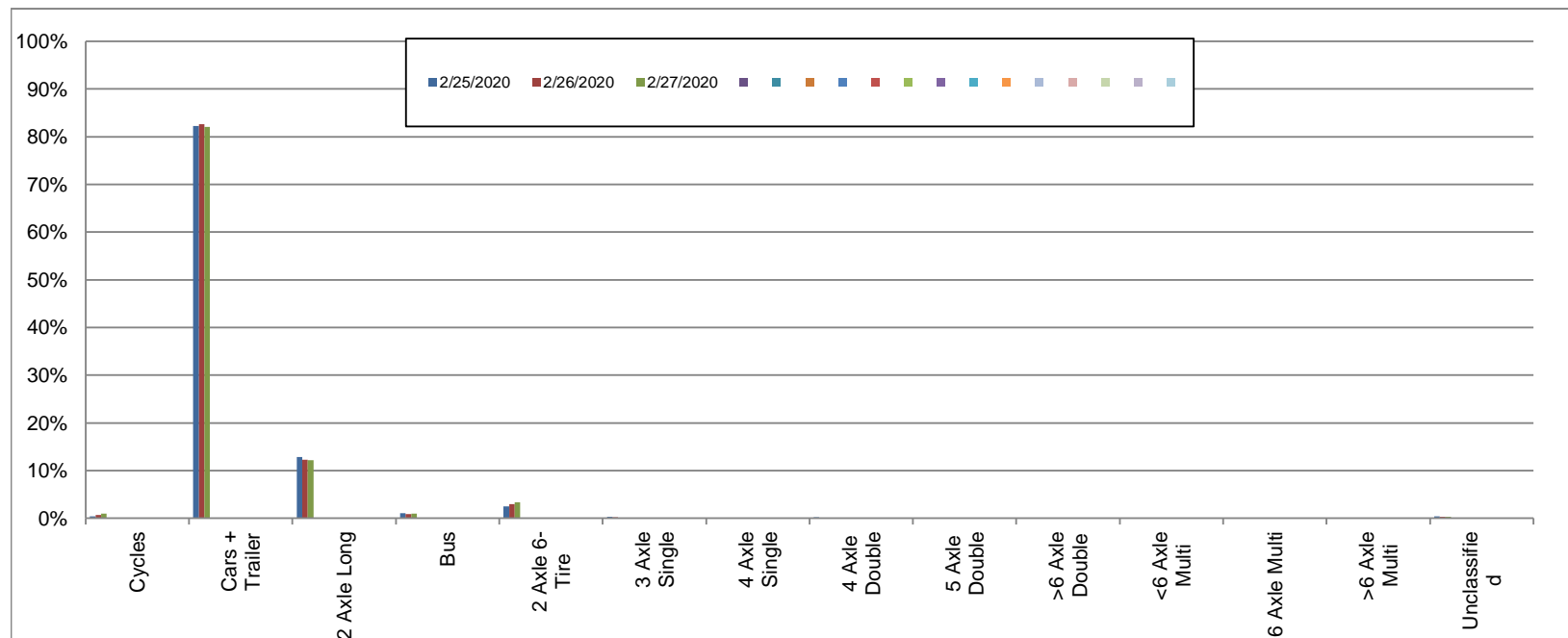
Northbound

February 25, 2020 to February 27, 2020

Daily Class Bin Percentages															Daily Class Bin Volumes															
Bin #	1	2	3	4	5	6	7	8	9	10	11	12	13	14	1	2	3	4	5	6	7	8	9	10	11	12	13	14	Total Volume	
Bin Class	Cycles	Cars + Trailer	2 Axle Long	Bus	2 Axle 6-Tire	3 Axle Single	4 Axle Single	4 Axle Double	5 Axle Double	>6 Axle Double	<6 Axle Multi	6 Axle Multi	>6 Axle Multi	Unclassified	Cycles	Cars + Trailer	2 Axle Long	Bus	2 Axle 6-Tire	3 Axle Single	4 Axle Single	4 Axle Double	5 Axle Double	>6 Axle Double	<6 Axle Multi	6 Axle Multi	>6 Axle Multi	Unclassified		
2/25/2020	0.4%	82.2%	12.8%	1.1%	2.5%	0.3%	0.0%	0.2%	0.0%	0.0%	0.0%	0.0%	0.0%	0.4%	8	1519	237	20	46	5	0	4	0	0	0	0	0	0	8	1847
2/26/2020	0.6%	82.7%	12.2%	0.9%	3.0%	0.2%	0.0%	0.1%	0.0%	0.0%	0.0%	0.0%	0.0%	0.3%	12	1549	229	17	56	4	0	1	0	0	0	0	0	0	6	1874
2/27/2020	1.0%	82.0%	12.2%	1.0%	3.4%	0.1%	0.0%	0.2%	0.0%	0.0%	0.0%	0.0%	0.0%	0.3%	19	1633	242	19	67	2	0	3	0	0	0	0	0	0	6	1991
Total	0.7%	82.3%	12.4%	1.0%	3.0%	0.2%	0.0%	0.1%	0.0%	0.0%	0.0%	0.0%	0.0%	0.4%	39	4701	708	56	169	11	0	8	0	0	0	0	0	20	5712	

Class Data Summary

Bin #	1	2	3	4	5	6	7	8	9	10	11	12	13	14	Total Volume
Bin Class	Cycles	Cars + Trailer	2 Axle Long	Bus	2 Axle 6-Tire	3 Axle Single	4 Axle Single	4 Axle Double	5 Axle Double	>6 Axle Double	<6 Axle Multi	6 Axle Multi	>6 Axle Multi	Unclassified	Total Volume
Survey Total	39	4701	708	56	169	11	0	8	0	0	0	0	0	20	5712
% Total	0.7%	82.3%	12.4%	1.0%	3.0%	0.2%	0.0%	0.1%	0.0%	0.0%	0.0%	0.0%	0.0%	0.4%	100%
Accumulated %	0.7%	83.0%	95.4%	96.4%	99.3%	99.5%	99.5%	99.6%	99.6%	99.6%	99.6%	99.6%	99.6%	100.0%	
Inv. Accum. %	99.3%	17.0%	4.6%	3.6%	0.7%	0.5%	0.5%	0.4%	0.4%	0.4%	0.4%	0.4%	0.4%	0.0%	



Classification Descriptions

Bin #	Bin Description
1	Motorcycles
2	Passenger cars, including those with recreational trailers
3	2-axle pick-ups, vans, and RVs, including those with recreational trailers
4	Buses
5	2-axle, 6-tire single units
6	3-axle single units
7	4-axle single units
8	3-axle or 4-axle double unit
9	5-axle double unit
10	6-, 7-, or 8-axle double unit
11	5-axle multiple unit
12	6-axle multiple unit
13	7-or-more-axle multiple unit
14	Vehicles that could not be classified

Site notes:

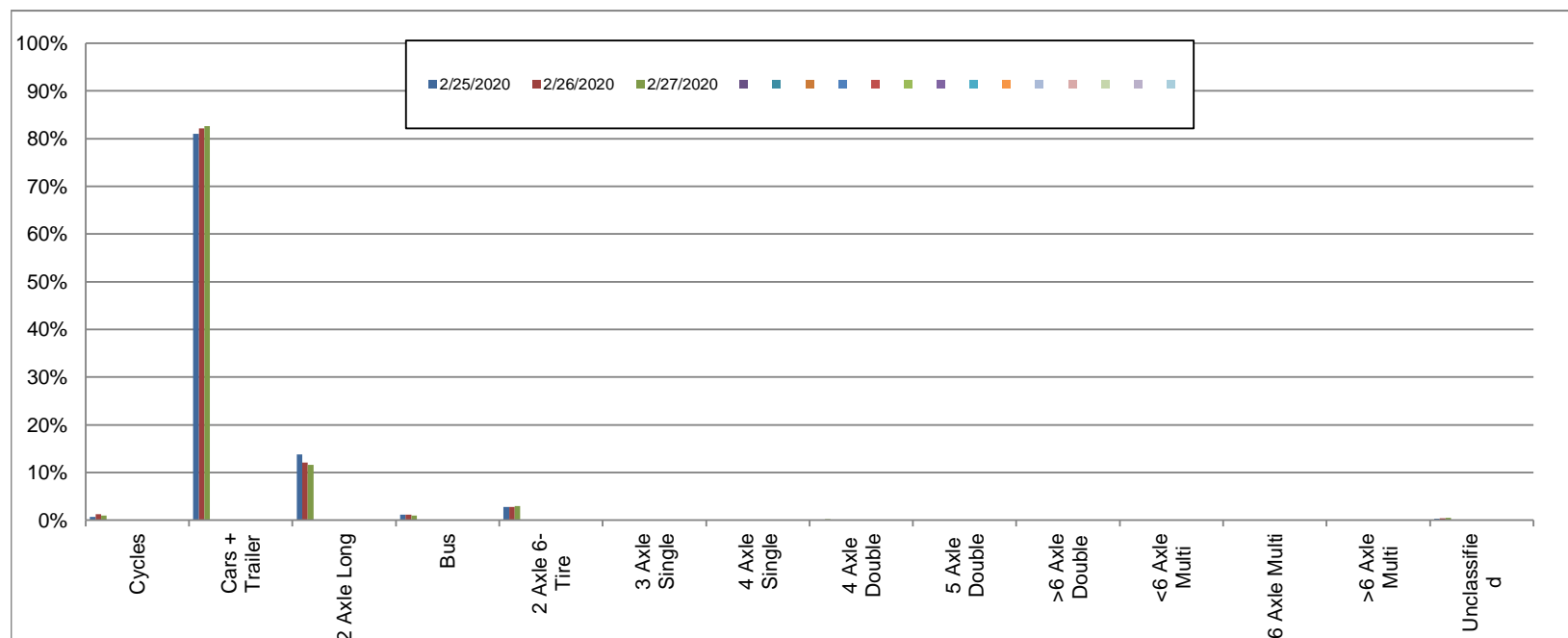
Chatterton Way between Royal Oak Dr and Royal Oak Ave

Southbound
February 25, 2020 to February 27, 2020

Daily Class Bin Percentages															Daily Class Bin Volumes											Total Volume				
Bin #	1	2	3	4	5	6	7	8	9	10	11	12	13	14	1	2	3	4	5	6	7	8	9	10	11		12	13	14	
Bin Class	Cycles	Cars + Trailer	2 Axle Long	Bus	2 Axle 6-Tire	3 Axle Single	4 Axle Single	4 Axle Double	5 Axle Double	>6 Axle Double	<6 Axle Multi	6 Axle Multi	>6 Axle Multi	Unclassified	Cycles	Cars + Trailer	2 Axle Long	Bus	2 Axle 6-Tire	3 Axle Single	4 Axle Single	4 Axle Double	5 Axle Double	>6 Axle Double	<6 Axle Multi	6 Axle Multi	>6 Axle Multi	Unclassified		
2/25/2020	0.7%	81.1%	13.7%	1.2%	2.8%	0.1%	0.0%	0.1%	0.0%	0.0%	0.0%	0.0%	0.0%	0.3%	14	1634	277	24	56	2	0	2	1	0	0	0	0	0	6	2016
2/26/2020	1.2%	82.2%	12.0%	1.2%	2.7%	0.1%	0.0%	0.0%	0.0%	0.0%	0.0%	0.0%	0.0%	0.4%	25	1685	247	24	56	2	0	1	1	0	0	0	0	0	9	2050
2/27/2020	0.9%	82.6%	11.6%	0.9%	3.0%	0.1%	0.0%	0.2%	0.0%	0.0%	0.0%	0.0%	0.0%	0.5%	20	1760	248	20	64	2	0	4	1	0	0	0	0	11	2130	
Total	1.0%	82.0%	12.5%	1.1%	2.8%	0.1%	0.0%	0.1%	0.0%	0.0%	0.0%	0.0%	0.0%	0.4%	59	5079	772	68	176	6	0	7	3	0	0	0	0	26	6196	

Class Data Summary

Bin #	1	2	3	4	5	6	7	8	9	10	11	12	13	14	Total Volume
Bin Class	Cycles	Cars + Trailer	2 Axle Long	Bus	2 Axle 6-Tire	3 Axle Single	4 Axle Single	4 Axle Double	5 Axle Double	>6 Axle Double	<6 Axle Multi	6 Axle Multi	>6 Axle Multi	Unclassified	Total Volume
Survey Total	59	5079	772	68	176	6	0	7	3	0	0	0	0	26	6196
% Total	1.0%	82.0%	12.5%	1.1%	2.8%	0.1%	0.0%	0.1%	0.0%	0.0%	0.0%	0.0%	0.0%	0.4%	100%
Accumulated %	1.0%	82.9%	95.4%	96.5%	99.3%	99.4%	99.4%	99.5%	99.6%	99.6%	99.6%	99.6%	99.6%	100.0%	
Inv. Accum. %	99.0%	17.1%	4.6%	3.5%	0.7%	0.6%	0.6%	0.5%	0.4%	0.4%	0.4%	0.4%	0.4%	0.0%	



Classification Descriptions

Bin #	Bin Description
1	Motorcycles
2	Passenger cars, including those with recreational trailers
3	2-axle pick-ups, vans, and RVs, including those with recreational trailers
4	Buses
5	2-axle, 6-tire single units
6	3-axle single units
7	4-axle single units
8	3-axle or 4-axle double unit
9	5-axle double unit
10	6-, 7-, or 8-axle double unit
11	5-axle multiple unit
12	6-axle multiple unit
13	7-or-more-axle multiple unit
14	Vehicles that could not be classified

Site notes: